



新興紡織(香港)有限公司
SUN HING TEXTILES (HONG KONG) LIMITED



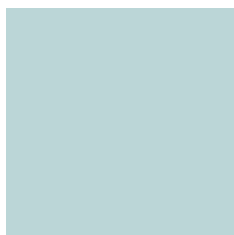
新兴新纺织科技(龙岩)有限公司
SUN HING NEW TEXTILES TECHNOLOGY (LONGYAN) LTD



SS LACE PATTERN
24 TREND FORECAST

Botanic Lovers

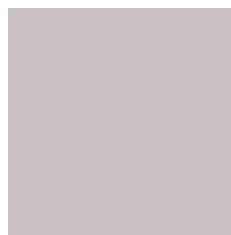
color palette



PANTONE®
12-4604 TCX



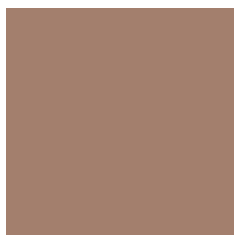
PANTONE®
12-1009 TCX



PANTONE®
13-3804 TCX



PANTONE®
15-0628 TCX



PANTONE®
17-1221 TCX



PANTONE®
15-1530 TCX



PANTONE®
13-0443 TCX



PANTONE®
17-1464 TCX



This story appeals to #Botanic Lovers and #Back-to-Nature lifestyles.

The intricate, heavy & thick garden flowers lace which is decorating with pretty & sheers mesh. Updating floral wildness with saturated vivid brights
It is important that using **recycled nylon yarns** to implement the concept of #Botanic Lovers. Arouse #Botanic Lovers drive a big leap to Carbon Neutral!

* Actual color please refer Pantone no. or actual color swatches.

* All images are for reference only.

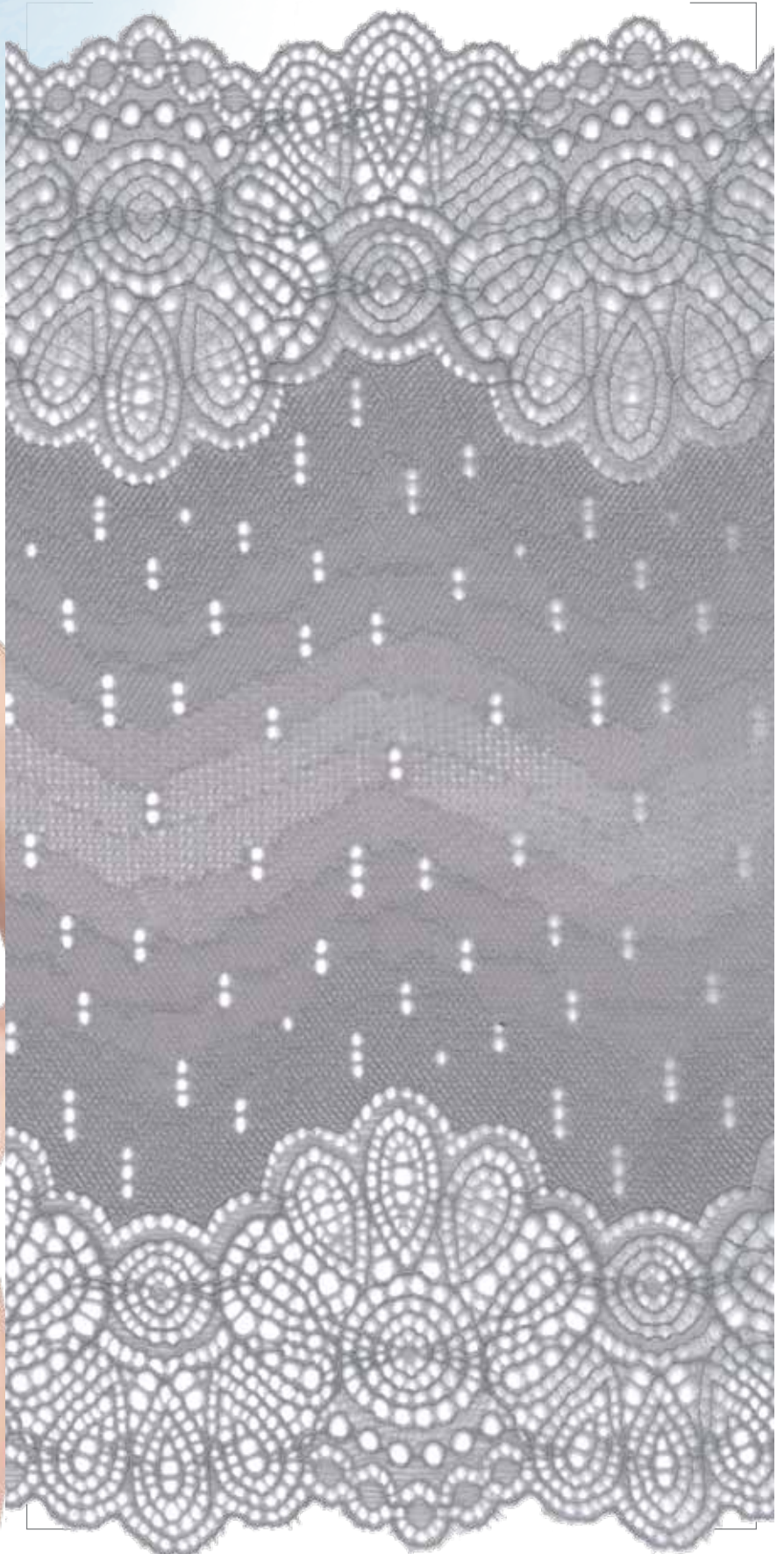


MG855921EH(UNI)

67% **Recycled Nylon** 16% Nylon 17% Elastane

Width: 22 cm

**Botanic
Lovers**





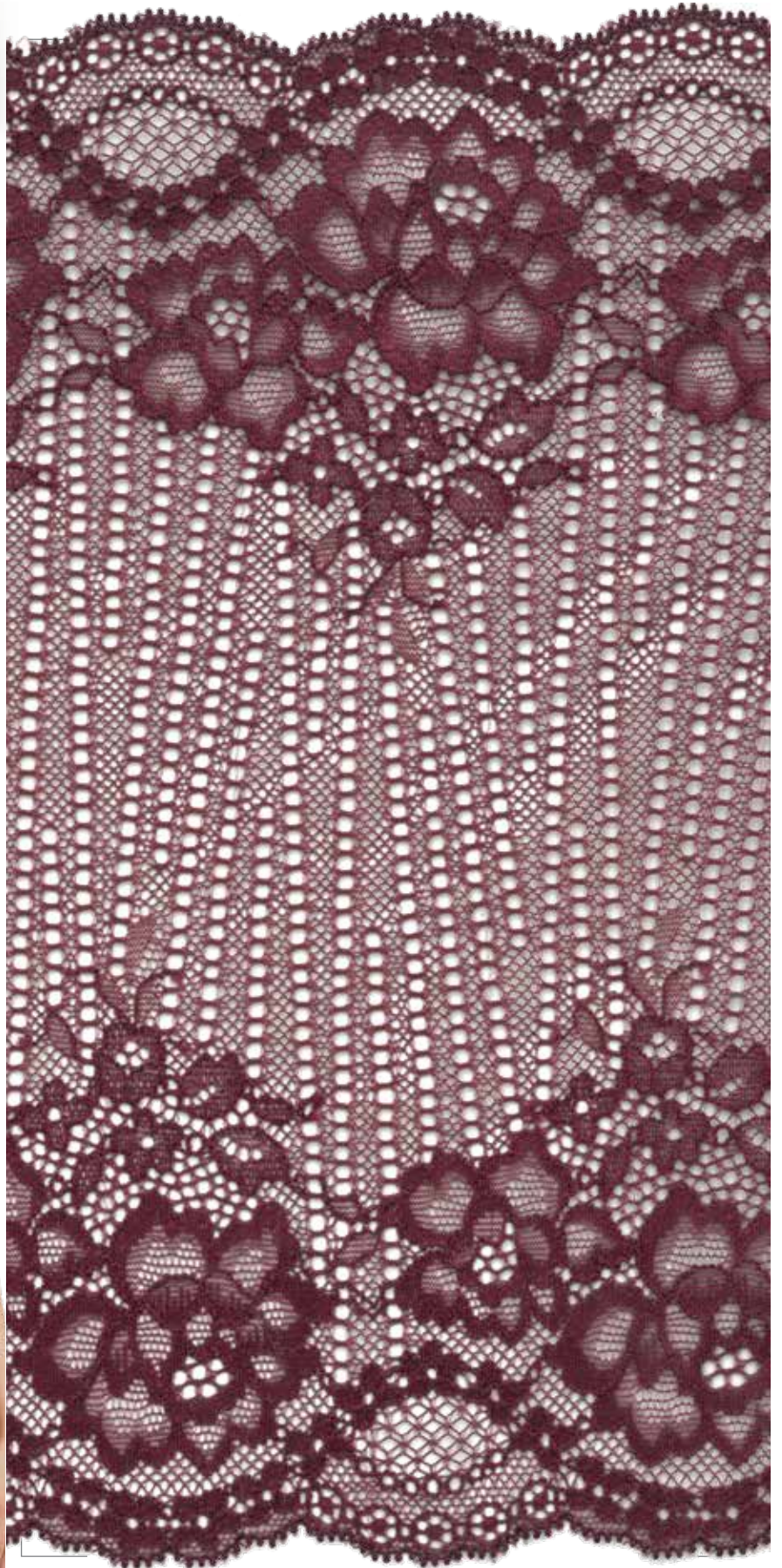
Botanic Lovers



MG905057ECH(UNI)

69% Recycled Nylon 14% Nylon 17% Elastane

Width: 23 cm



© Copyright ©Sun Hing Textiles (Hong Kong) Limited



**Botanic
Lovers**



MG905099H(UNI)

86% **Recycled Nylon** 14% Elastane

Width: 23 cm

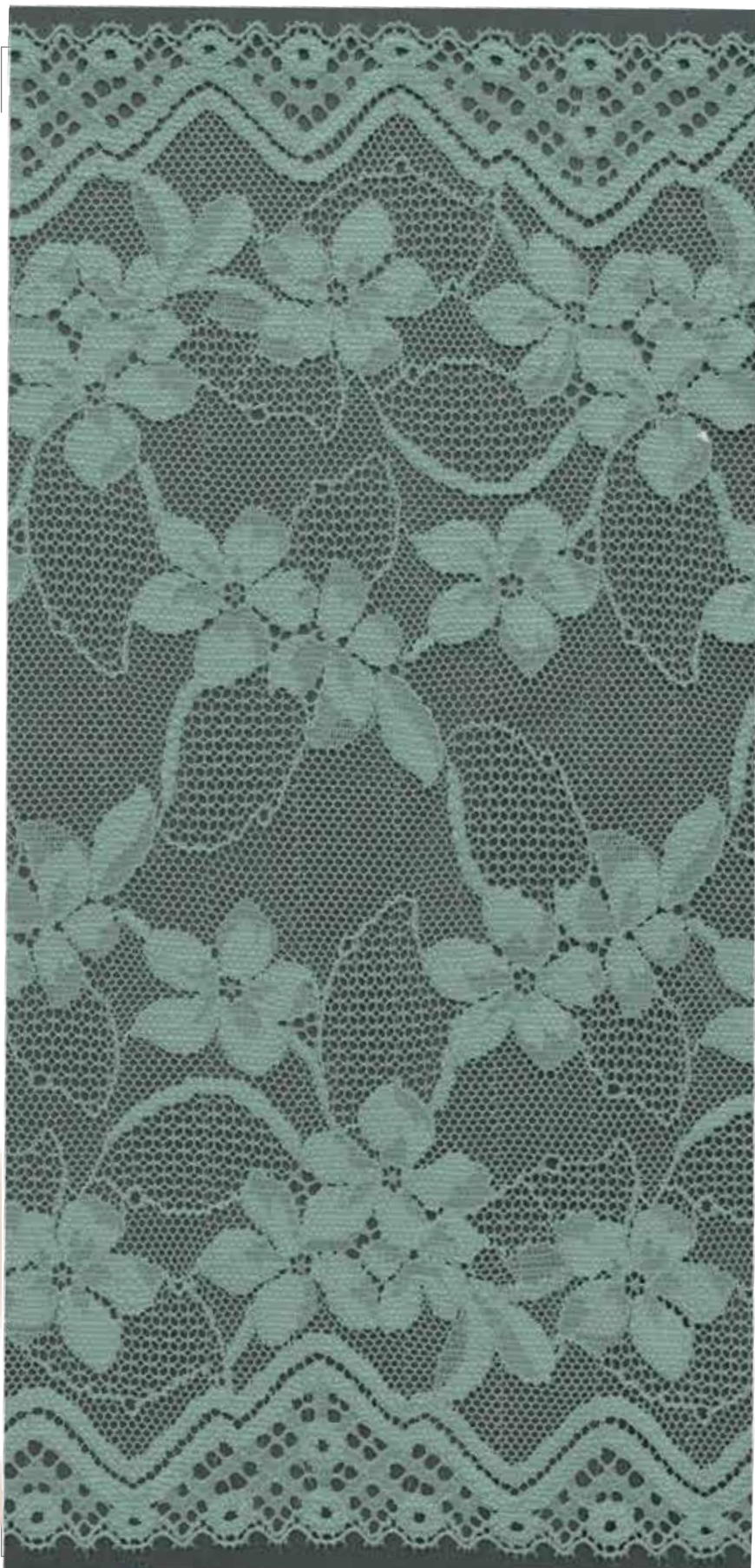


MG906196EH(UNI)

80% Recycled Nylon 7% Nyon 13% Elastane

Width: 23 cm

**Botanic
Lovers**



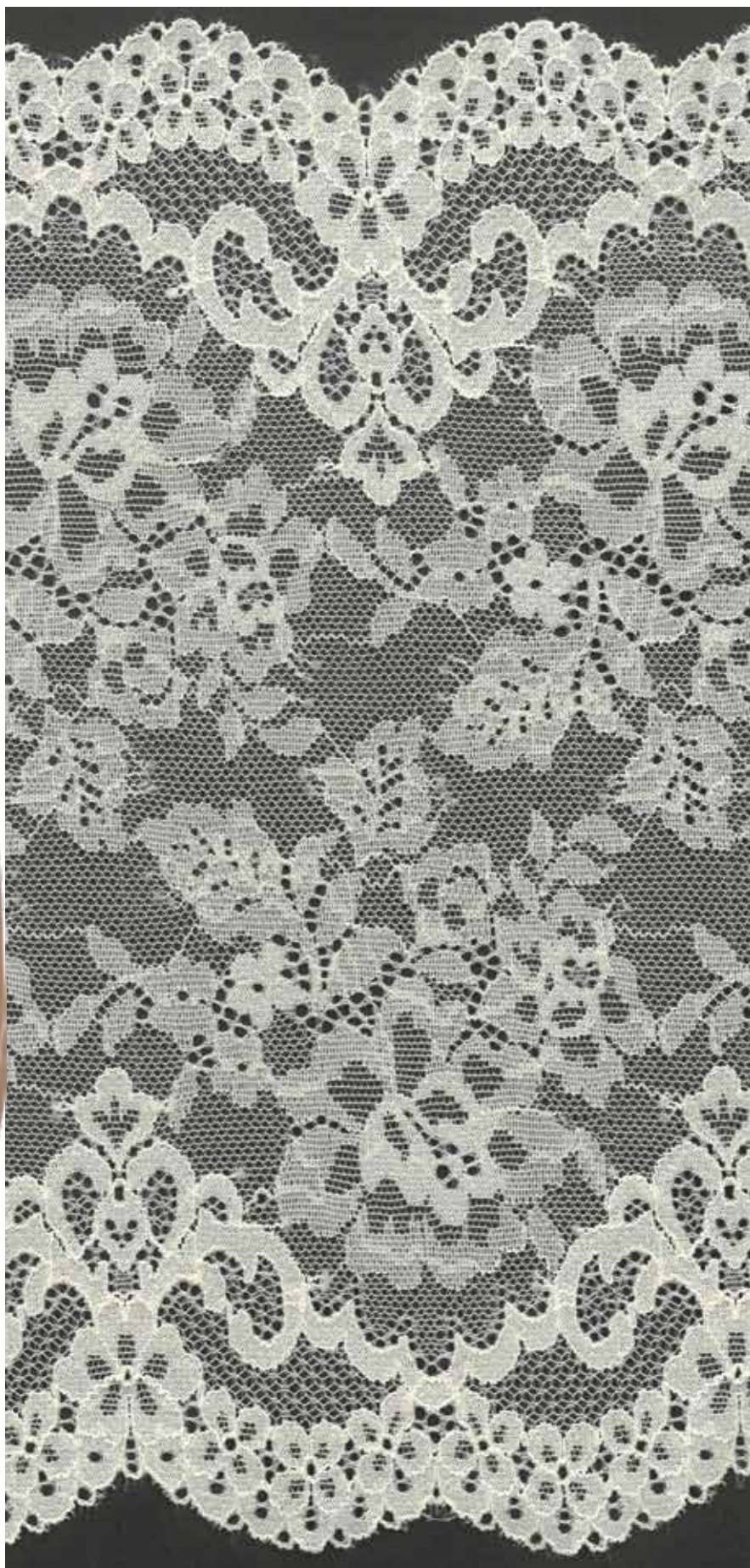


M905937ECH(UNI)

56% **Recycled Nylon** 29% Nylon 15% Elastane

Width: 23 cm

**Botanic
Lovers**



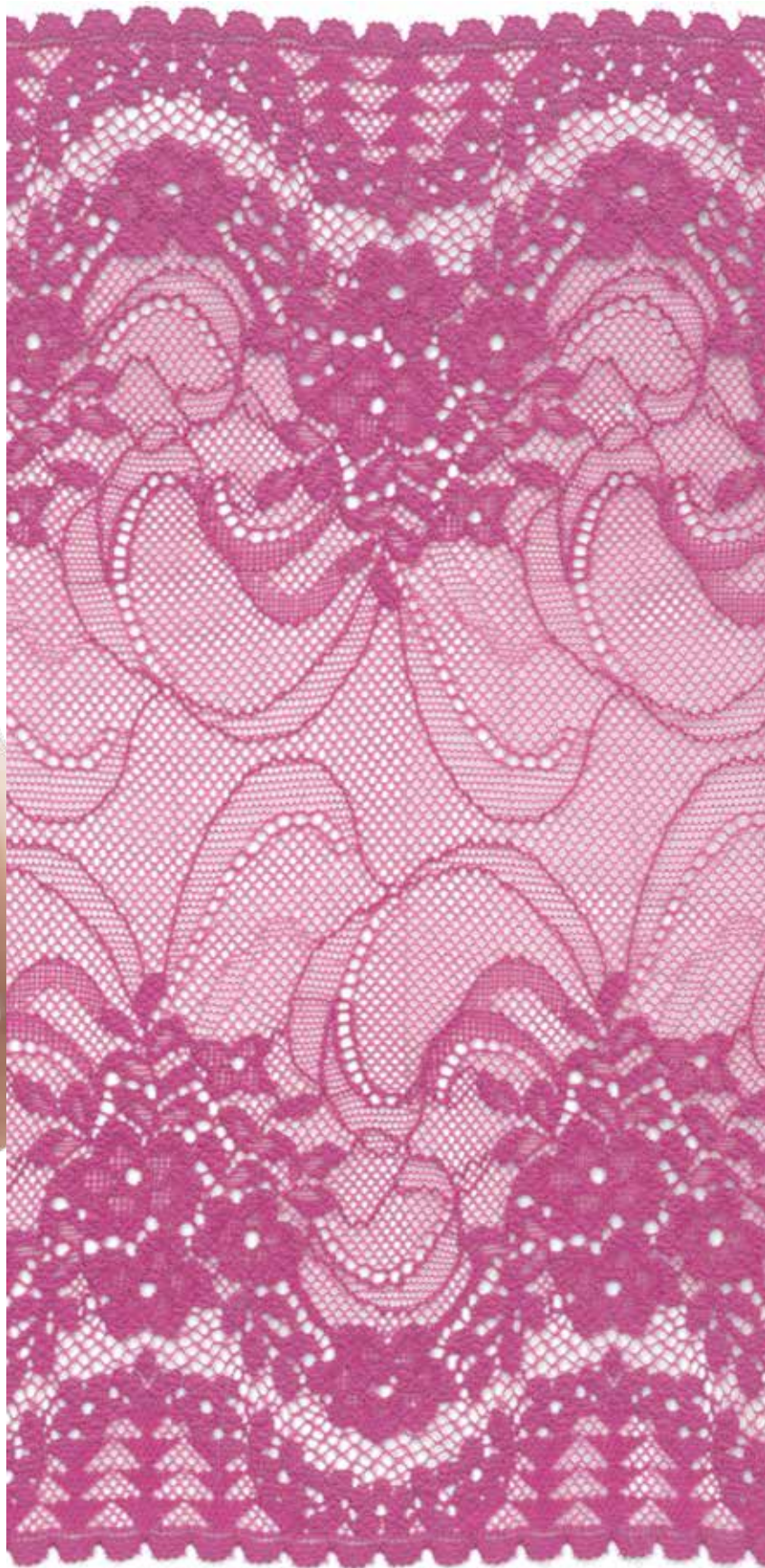


M916249EH(UNI)

86% Recycled Nylon 14% Elastane

Width: 23.2 cm

**Botanic
Lovers**



70S Powers

color palette →



PANTONE®
12-1708 TCX



PANTONE®
16-4036 TCX



PANTONE®
16-6340 TCX



PANTONE®
14-0756 TCX



PANTONE®
15-1335 TCX



PANTONE®
18-1664 TCX



PANTONE®
18-2143 TCX



PANTONE®
17-1221 TCX

#70S Powers brings playful and joy around 2024 Summer.

Express a sense of joy with handpainted, artful prints, tapping into childlike naivety and the prevalent DIY aesthetic to update florals, abstract and symbols patterns.

Doodle styles fit in perfectly with the Kidult trend, which is gaining traction among young consumers. They are #Energique Youth and #Joy Division.

* Actual color please refer Pantone no. or actual color swatches.

* All images are for reference only.



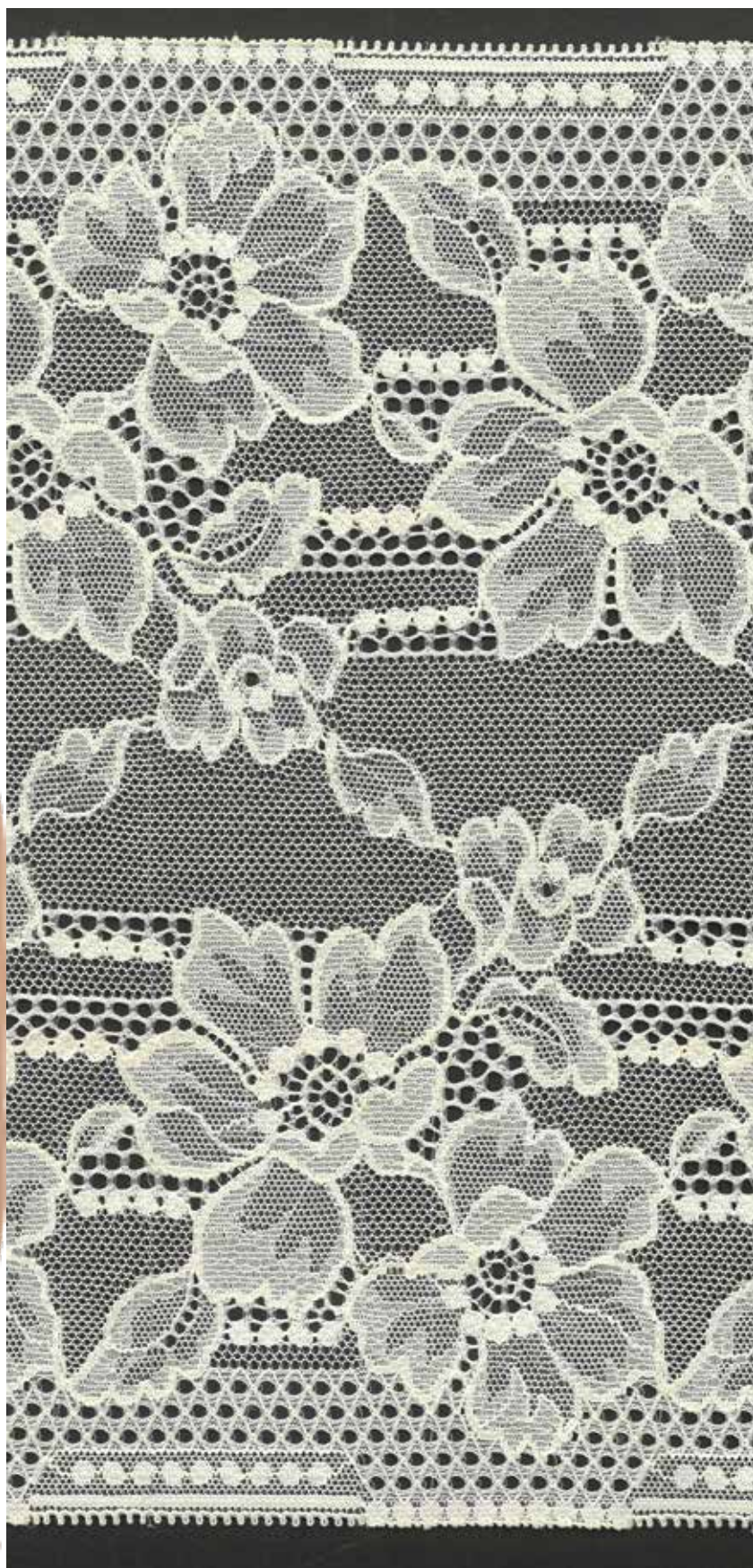


M905999H(UNI)

77% Recycled Nylon 10% Nylon 13% Elastane

Width: 23 cm

**70S
powers**



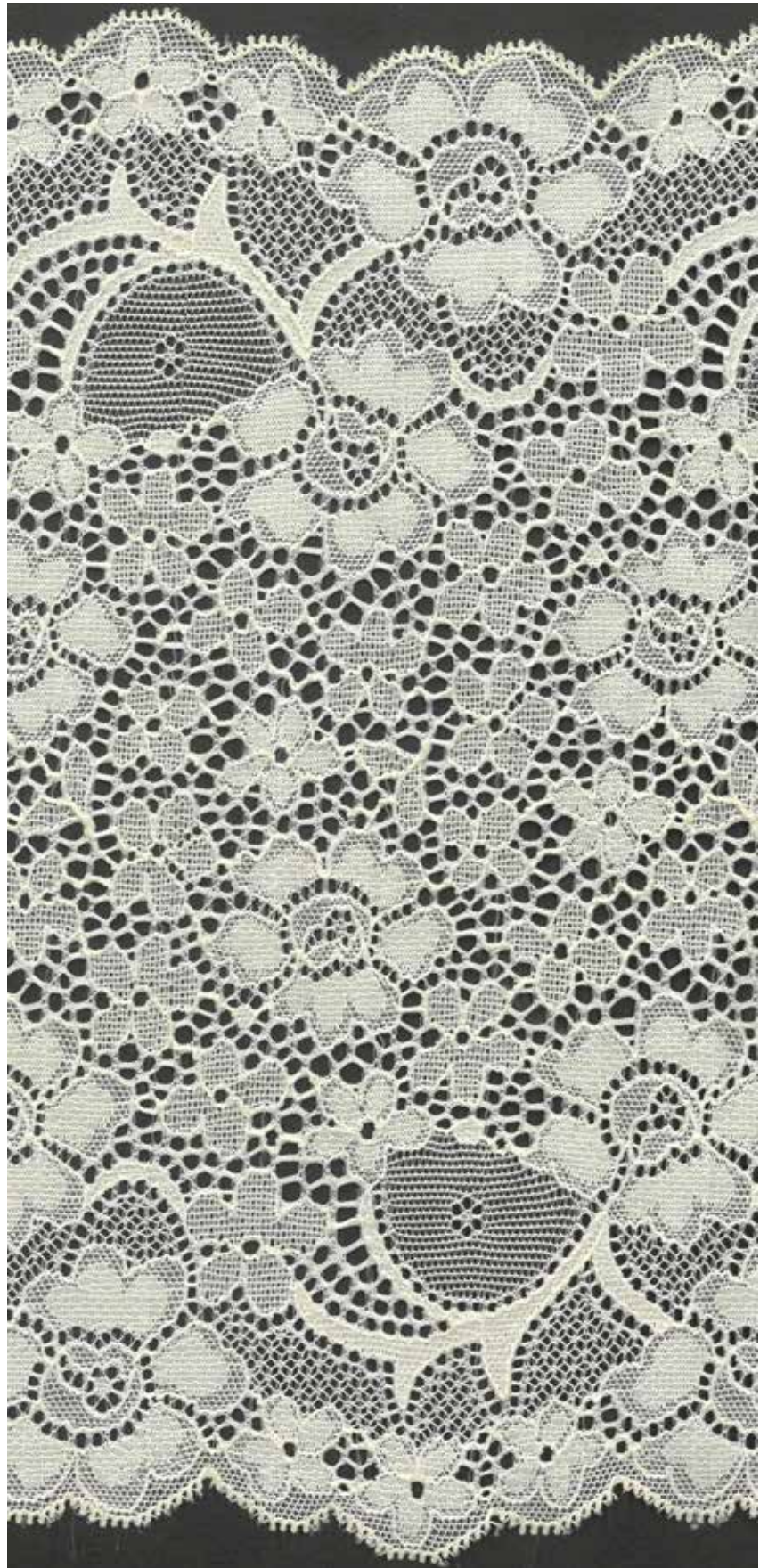


M906246H(UNI)

84% Recycled Nylon 3% Nylon 13% Elastane

Width: 23 cm

**70S
powers**





MG904587EH(UNI)

71% Recycled Nylon 12% Nylon 17% Elastane

Width: 23 cm

**70S
powers**





Clean Cut

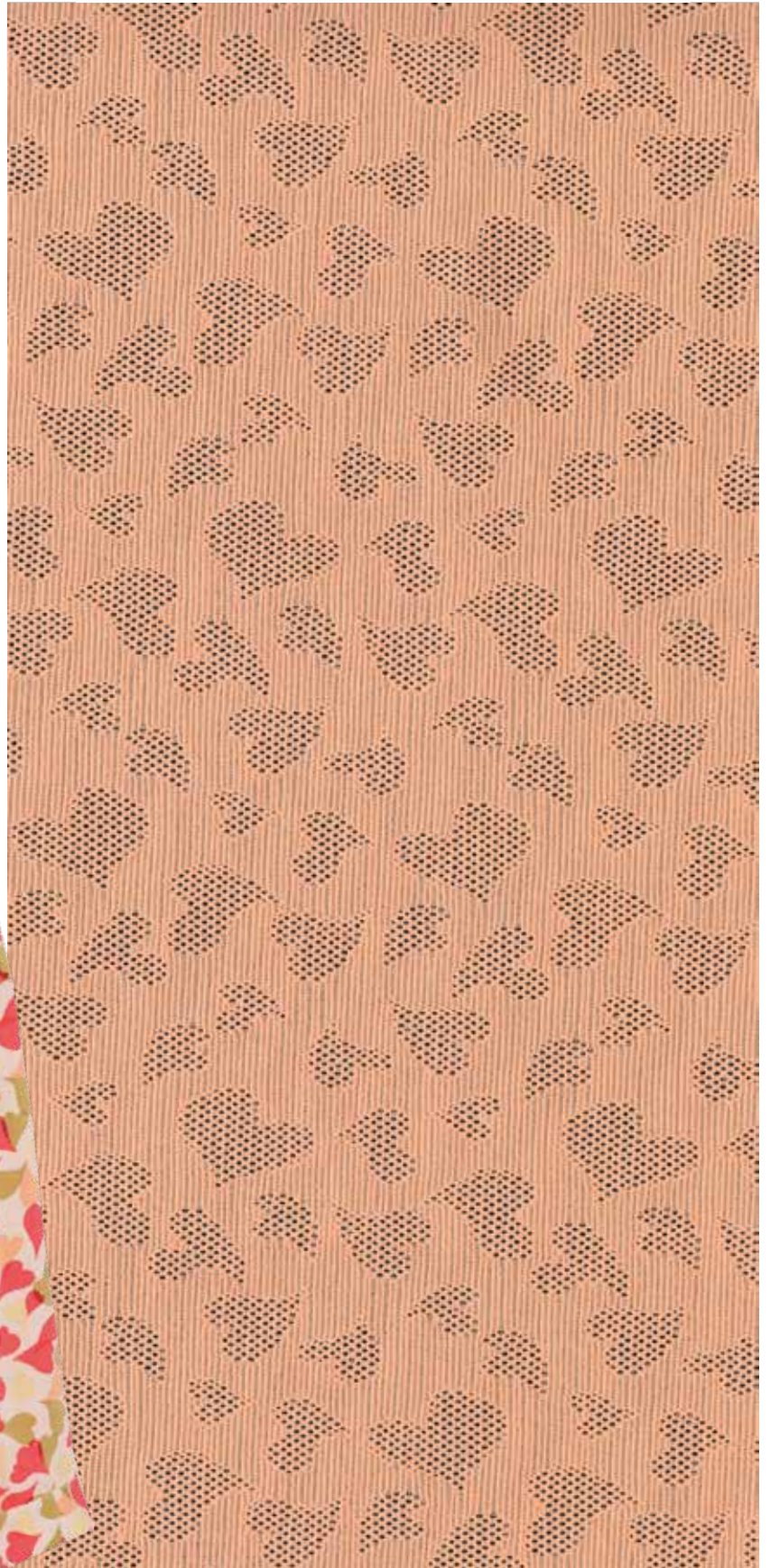
JUM886232

69% Nylon 31% Elastane

Width:130 cm



**70S
powers**





Clean Cut

JU886261

74% Nylon 26% Elastane

Width: 135 cm

**70S
powers**





Clean Cut



JUM886231

70% Nylon 30% Elastane

Width: 130 cm

**70S
Powers**

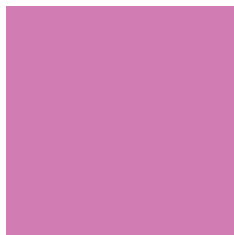


Firework Bloom

color palette



PANTONE®
17-1663 TCX



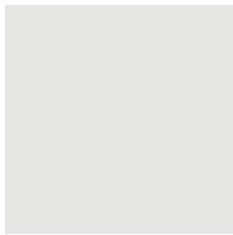
PANTONE®
16-3118 TCX



PANTONE®
13-1025 TCX



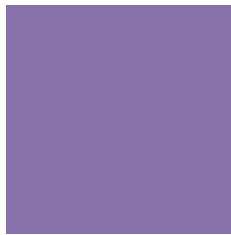
PANTONE®
14- 6329 TCX



PANTONE®
11-4800 TCX



PANTONE®
17-2034 TCX



PANTONE®
17-3730 TCX



PANTONE®
19-3921 TCX

#Firework Blooms conjure up hedonistic nights of celebrations, serving the desire for dressy looks after a period of plainness.

Inspired by fireworks of the summer festival, enhance festival and party vibes for showing happiness, vitality. Our **#Festival Firework** collection delineate different shape and vibrant blooms in the dark night.

* Actual color please refer Pantone no. or actual color swatches.

* All images are for reference only.

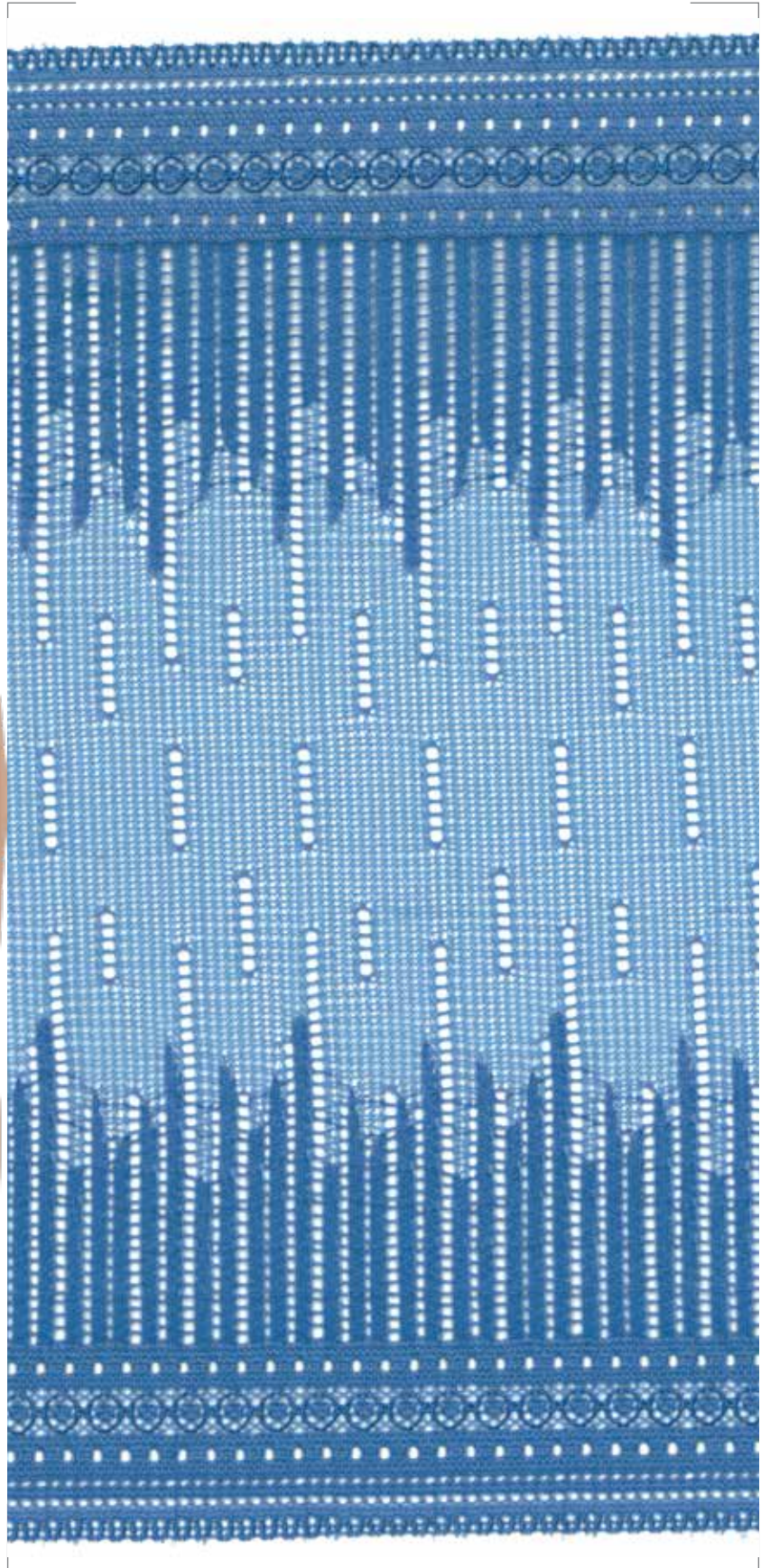


MG864507EH(UNI)

68% Recycled Nylon 16% Nylon 16% Elastane

Width: 22.5 cm

**Firework
Bloom**





MG865149EH(UNI)

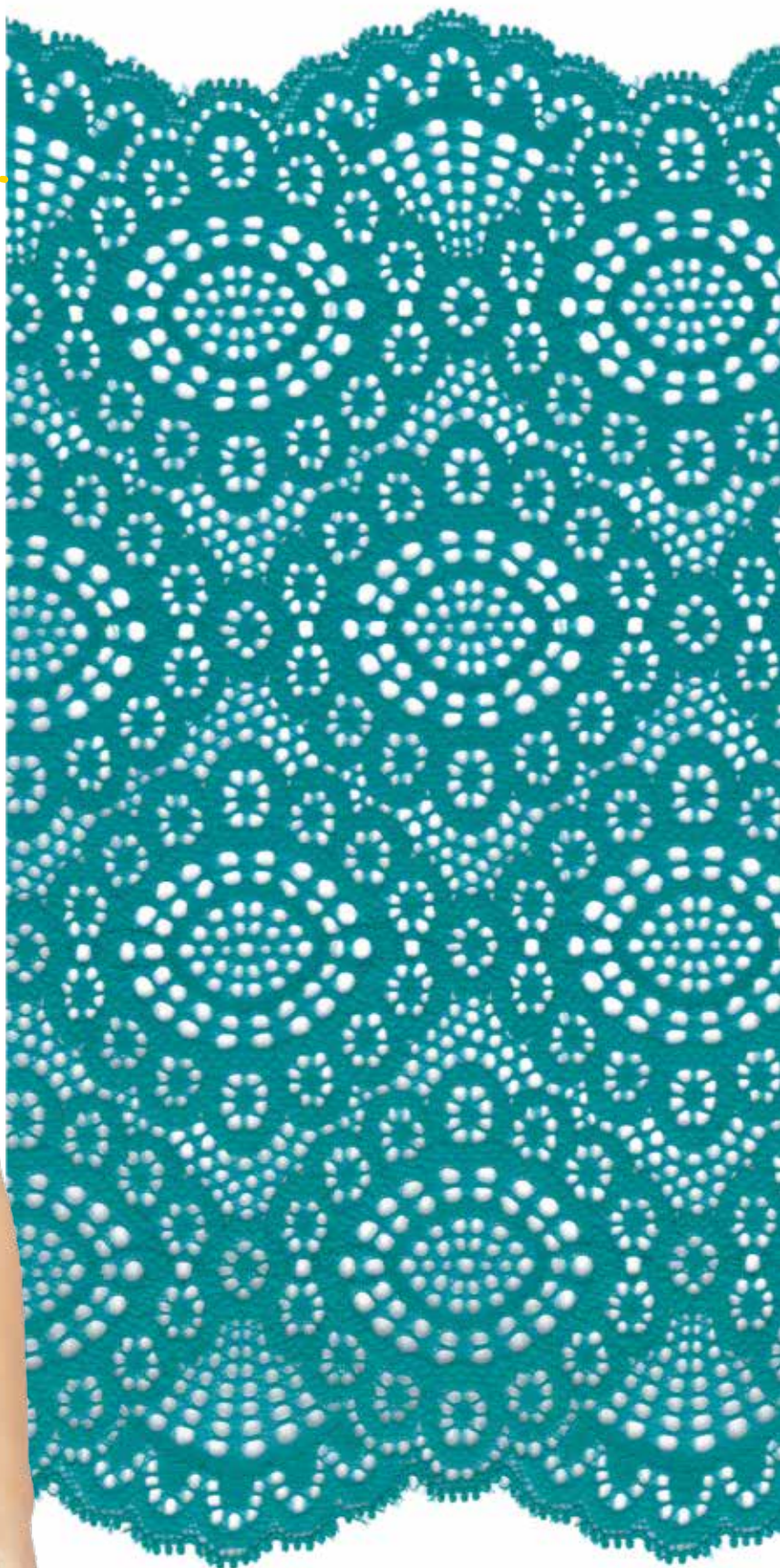
79% Recycled Nylon

7% Nylon

14% Elastane

Width: 22.5 cm

**Firework
Bloom**





Firework Bloom

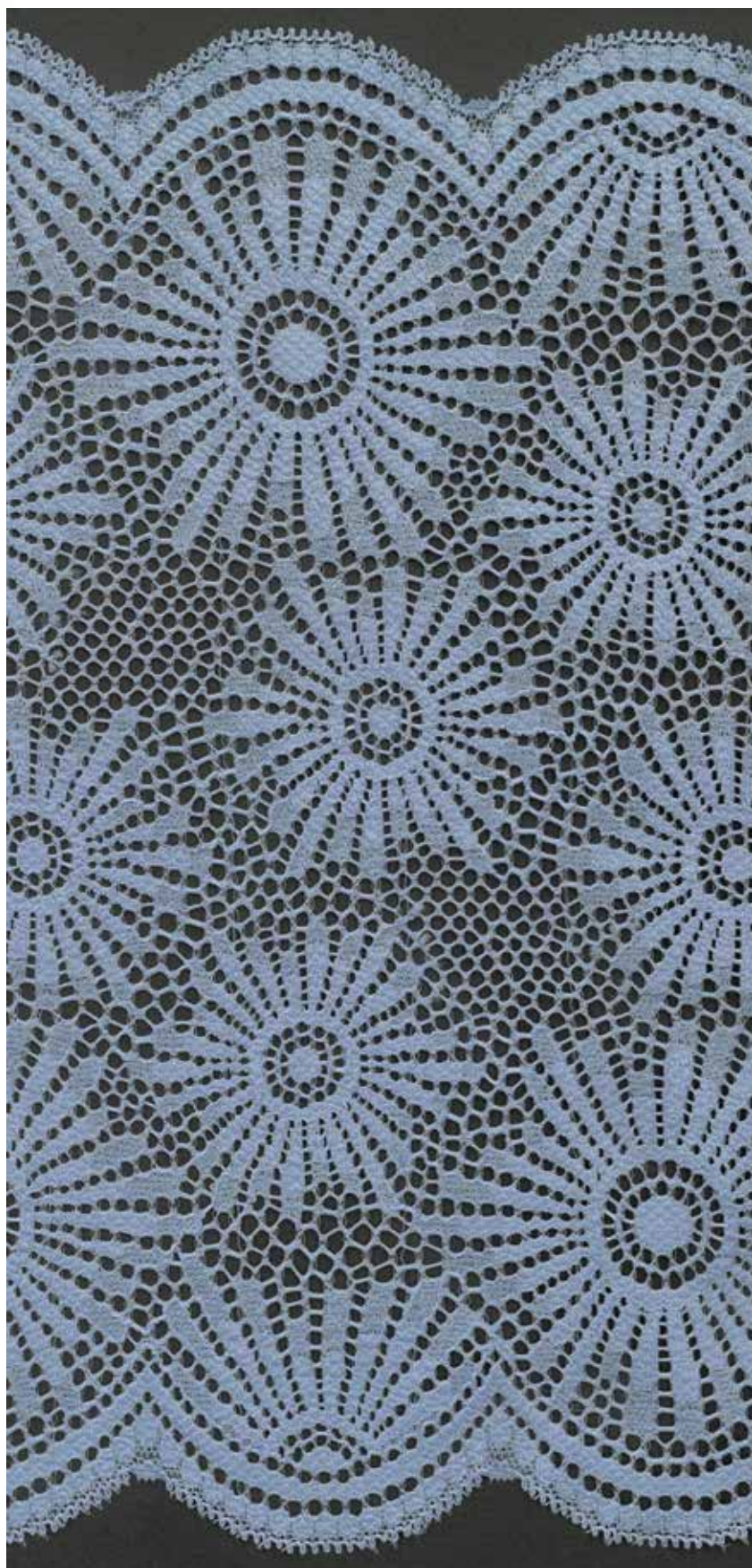
M905933CH(UNI)

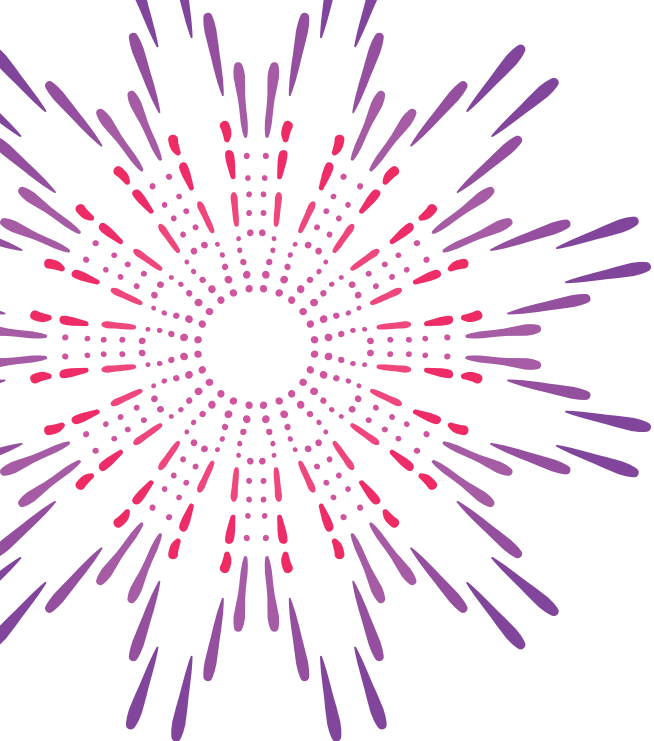
86% Recycled Nylon

3% Nylon

11% Elastane

Width: 23 cm



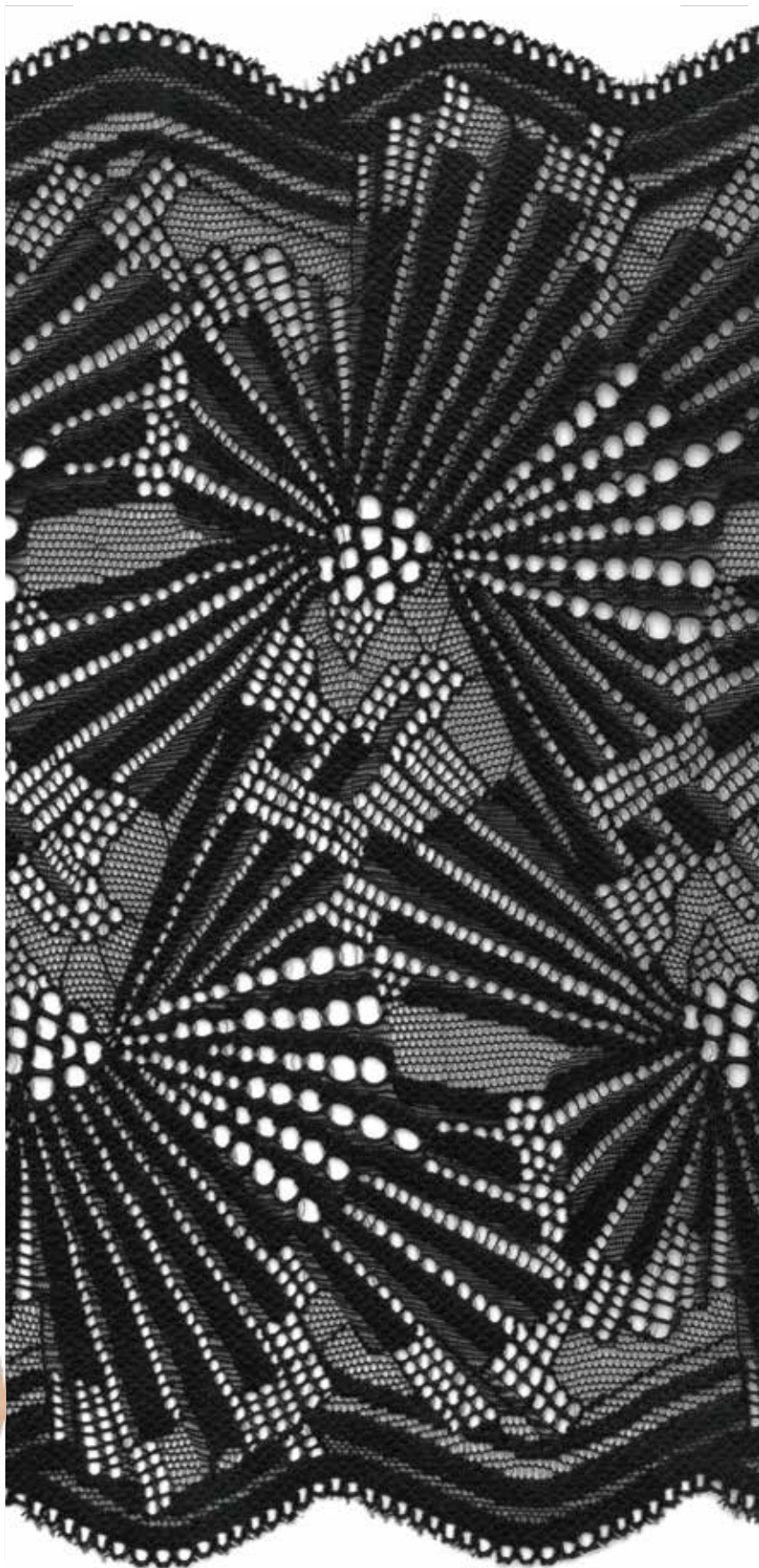


M905926H(UNI)

79% Recycled Nylon 10% Nylon 11% Elastane

Width: 23 cm

Firework Bloom





MG908668ECH(UNI)

76% Recycled Nylon 8% Nylon 16% Elastane

Width: 23 cm





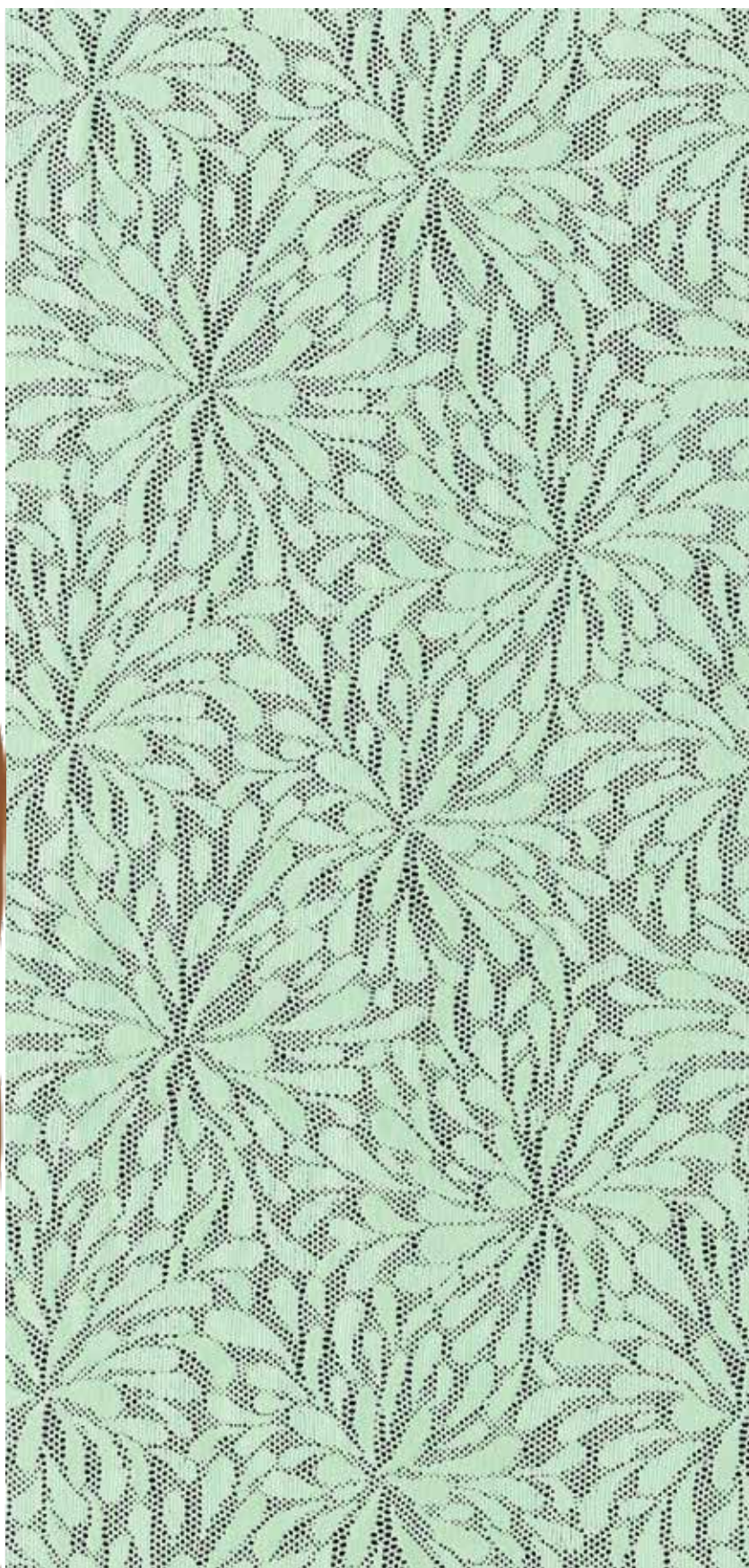
JU885718

71% Nylon 29% Elastane

Width: 160 cm



Clean Cut



Kaleidoscopic

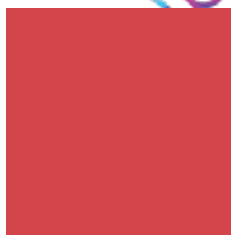
color palette



PANTONE®
13-0650 TCX



PANTONE®
18-2436 TCX



PANTONE®
17-1663 TCX



PANTONE®
17-1464 TCX



PANTONE®
18-3737 TCX



PANTONE®
19-3952 TCX



PANTONE®
14-4123 TCX



PANTONE®
17-4139 TCX

These tiled, mirrored and repeats linear, geometrics and floral patterns are called out as #Kaleidoscopic.

Mix-and-match with smaller scales and tonal colours for a sophisticated look.
This alternative repeats.



* Actual color please refer Pantone no. or actual color swatches.

* All images are for reference only.



MG866230H(UNI)

88% Recycled Nylon 12% Elastane

Width: 22.5 cm

Kaleidoscopie





MG905945H(UNI)

90% Recycled Nylon 10% Elastane

Width: 23 cm





M905798EH(UNI)

79% Recycled Nylon 9% Nylon 12% Elastane

Width: 23 cm



Kaleidoscopie





M905956H(UNI)

89% Recycled Nylon 11% Elastane

Width: 23 cm

Kaleidoscopie





M906203EH(UNI)

72% Recycled Nylon 11% Nylon 17% Elastane

Width: 23 cm

Kaleidoscopie





M906158EH(UNI)

79% Recycled Nylon 7% Nylon 14% Elastane

Width: 23 cm

Kaleidoscopie

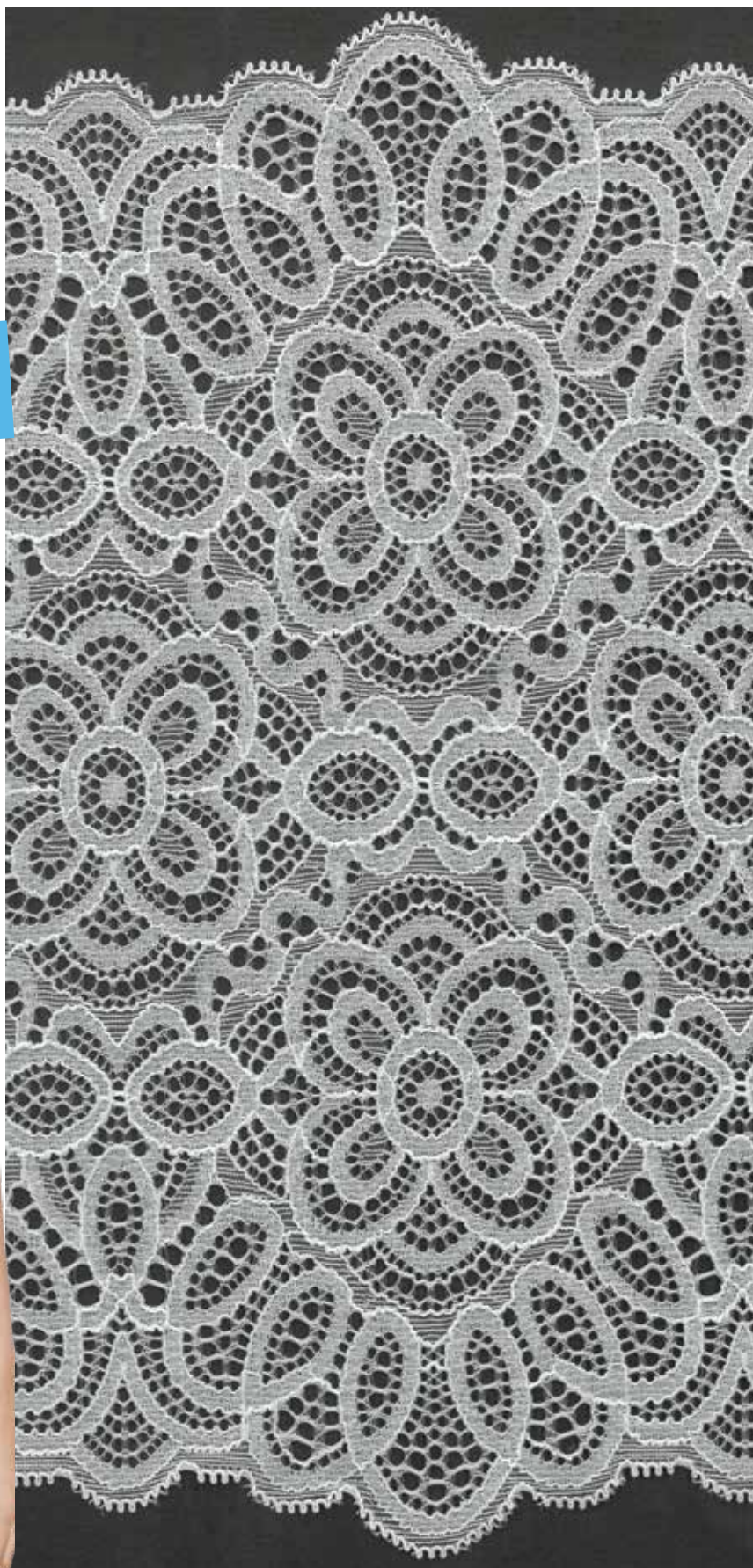


M905943EH(UNI)

64% **Recycled Nylon** 21% Nylon 15% Elastane

Width: 23 cm

Kaleidoscopie



J885980EH(UNI)

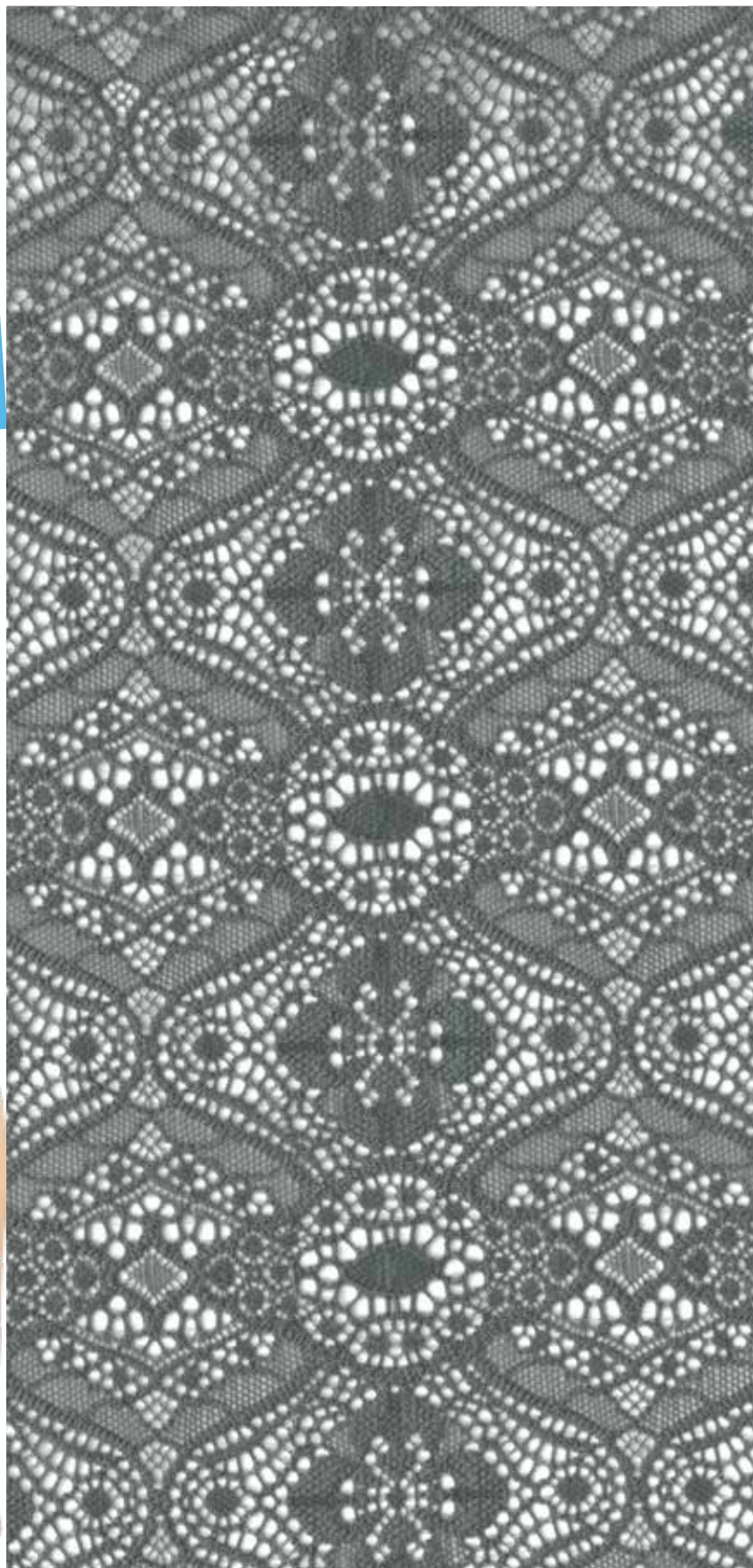
80% **Recycled Nylon**

6% Nylon

14% Elastane

Width: 136 cm

Kaleidoscopie

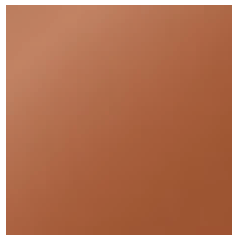


Versailles

color palette →



PANTONE®
19-4203 TCX



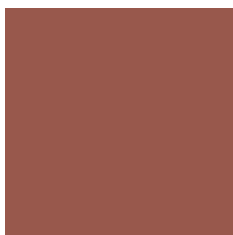
PANTONE®
8025 C



PANTONE®
16-1164 TCX



PANTONE®
15-0956 TCX



PANTONE®
18-1441 TCX



PANTONE®
18-1657 TCX



PANTONE®
15-1247 TCX



PANTONE®
17-3014 TCX

#Versailles a new words to call out us a luxury, elegant and relaxed style in recent years.

The Palace of Versailles is . It was inspired by the Baroque architecture that originated in Italy but was constructed in a classical French Baroque style. Inspired by the decorations of Versailles, we creates the delicates *#Versailles* laces. It is perfect for french style slips nightdress & nightgowns.

* Actual color please refer Pantone no. or actual color swatches.

* All images are for reference only.



MG865940H(UNI)

87% **Recycled Nylon** 2% Nylon 11% Elastane

Width: 22.5 cm

Versailles

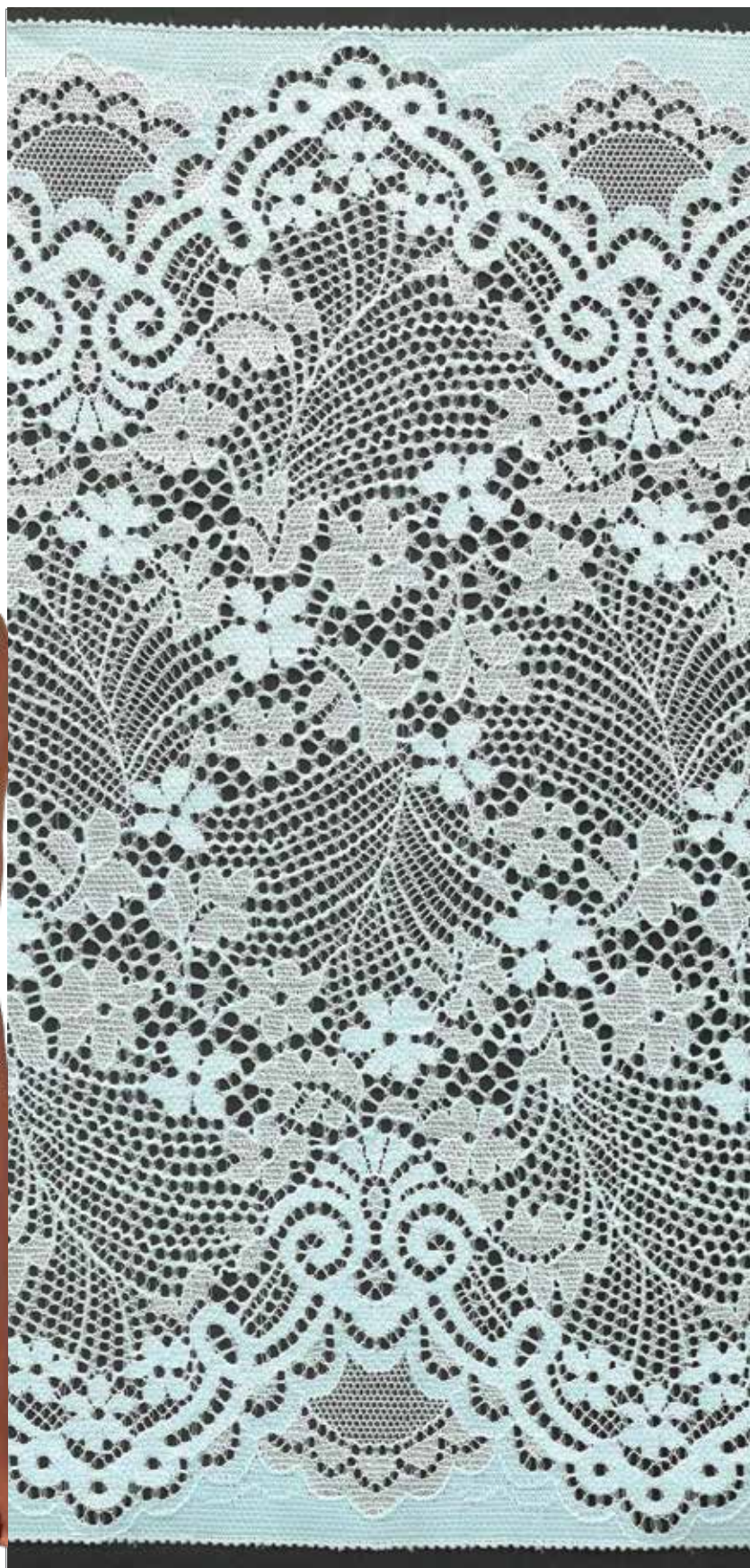


M906168H(UNI)

69% Recycled Nylon 20% Nylon 11% Elastane

Width: 23 cm

Versailles



MG905818ECH(UNI)

84% Recycled Nylon 16% Elastane

Width: 23 cm

Versailles

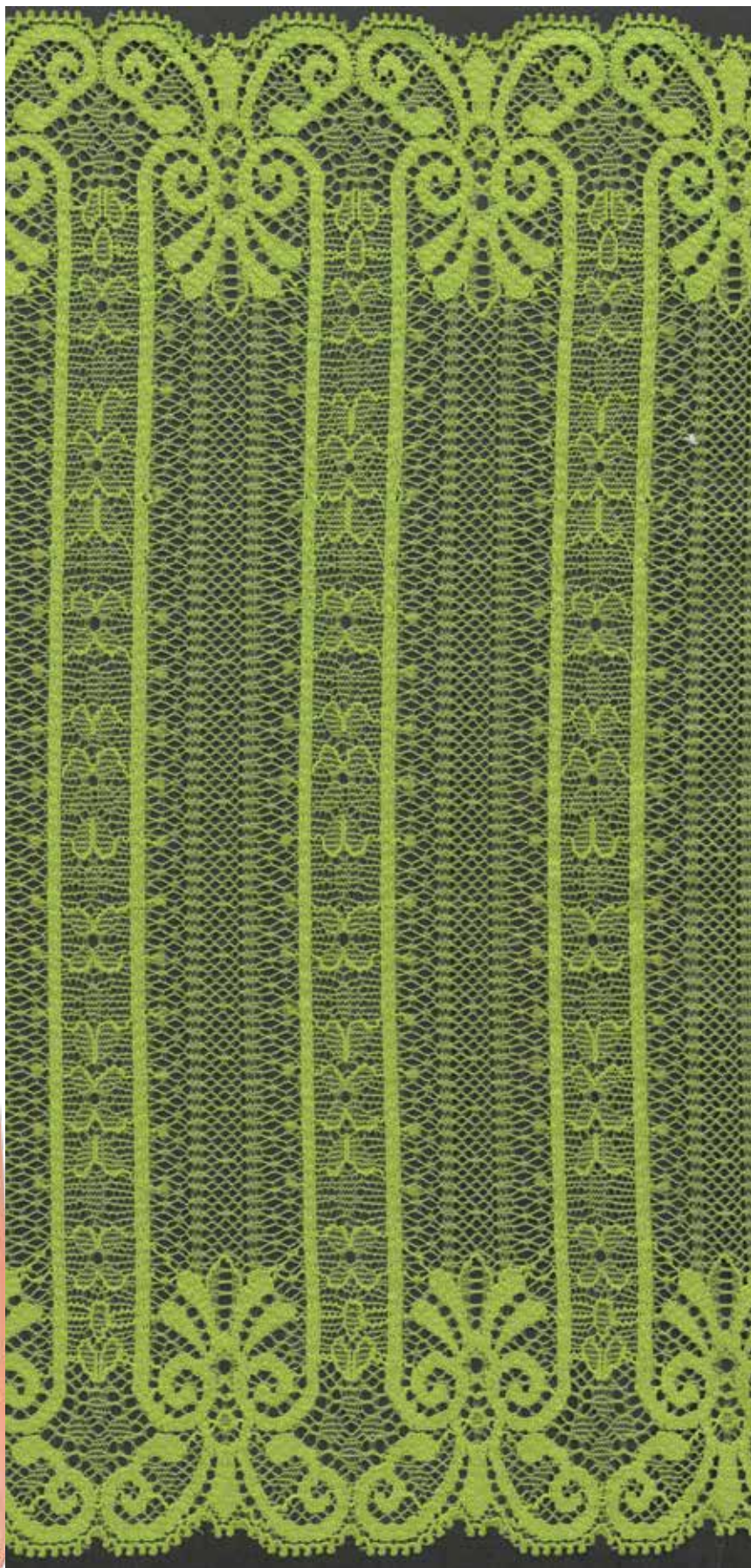


MG904591ECH(UNI)

80% Recycled Nylon 3% Nylon 17% Elastane

Width: 23 cm

Versailles



© Copyright ©Sun Hing Textiles (Hong Kong) Limited

M905722EH(UNI)

81% **Recycled Nylon** 5% Nylon 14% Elastane

Width: 23 cm

Versailles

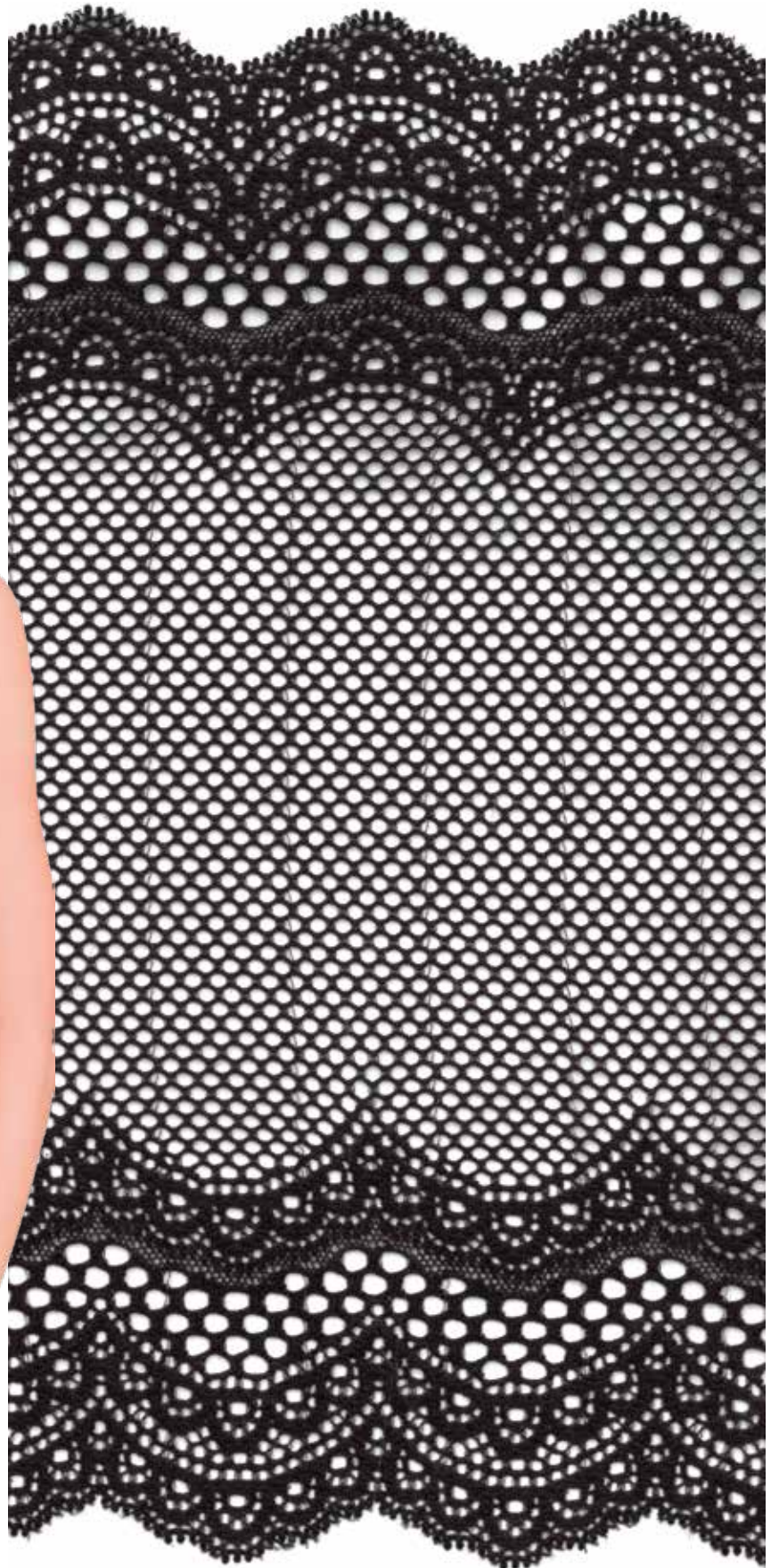


MG905325H(UNI)

83% Recycled Nylon 3% Nylon 14% Elastane

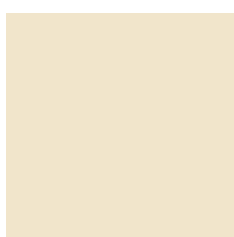
Width: 23 cm

Versailles



Digital World

color palette →



PANTONE®
11-0510 TCX



PANTONE®
12-0826 TCX



PANTONE®
13-0753 TCX



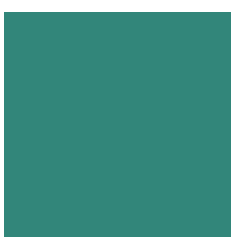
PANTONE®
14-1521 TCX



PANTONE®
17-1937 TCX



PANTONE®
13-5409 TCX



PANTONE®
17-5936 TCX



PANTONE®
16-4020 TCX

Update decorative laces by experimenting with trendy digital printing that provide unlimited visual possibilities.

Including printed gradient patterns to add surface interest that can be more eye-catching, playful & youthful.

* Actual color please refer Pantone no. or actual color swatches.

* All images are for reference only.





MG864254EH(UNI)

86% Recycled Nylon 14% Elastane

Width: 22.5 cm

Print no. : P33485





MG865046ECH(UNI)

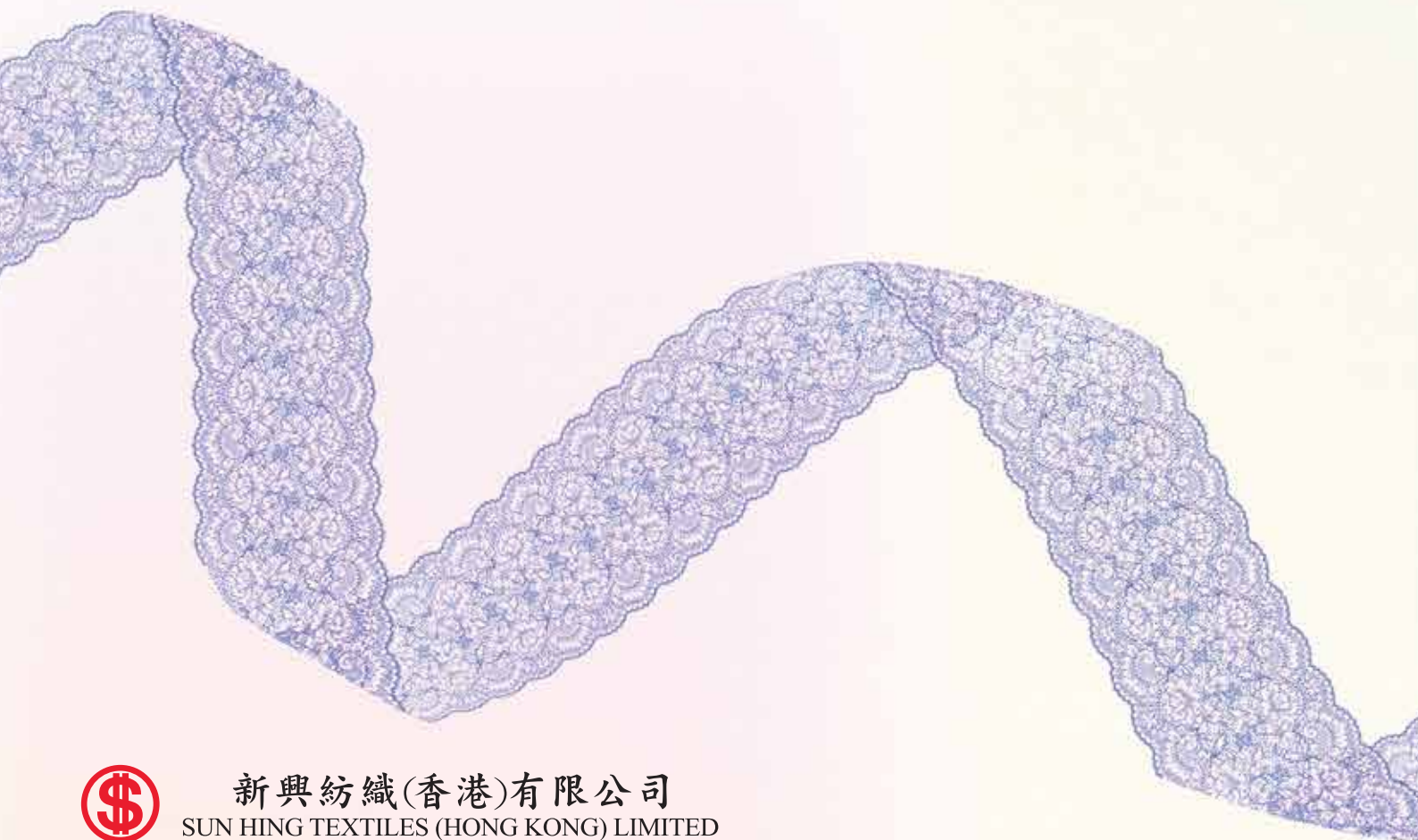
79% Recycled Nylon 4% Nylon 17% Elastane

Width: 22 cm

Prit no. : P33486



Copyright © 2019 by Textiles (Pvt.) Ltd. All rights reserved



新興紡織(香港)有限公司
SUN HING TEXTILES (HONG KONG) LIMITED



+852 22128128



Flat A-C, G/F, Stage 1, Mercantile Ind. & Warehouse Bldg, 16-24,
Ta Chuen Ping Street, Kwai Chung, N.T., Hong Kong.
香港新界葵涌打磚坪街16-24號有利工業貨倉大廈第一期地下A-C座



新兴新纺织科技(龙岩)有限公司
SUN HING NEW TEXTILES TECHNOLOGY (LONGYAN) LTD



+86 597 2658888



333 Yanxin Road, Yanxing Village, Yanshi Town, Xinluo District,
Longyan City, Fujian Province, P.R.China
中国福建省龙岩市新罗区雁石镇岩星村雁新路333号